



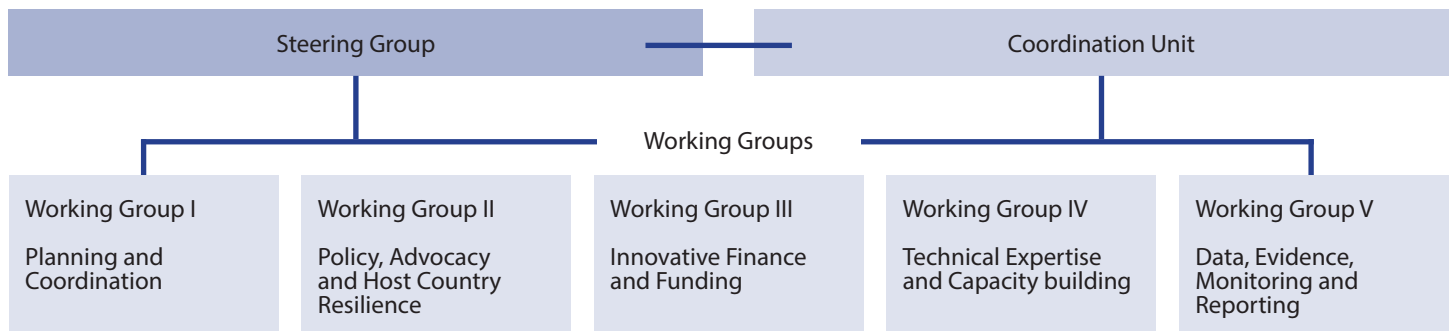
Brown Bag lunch on Sustainable Energy Access in Situations of Displacement

Access to fuel and energy is critical to essential activities such as cooking meals, heating shelters, cooling vaccines, charging mobile phones, and powering humanitarian operations. Current energy practices in situations of displacement are often insufficient, inefficient, unsafe, expensive and inadequate for displaced people, harmful to the surrounding environment, and costly for implementers. Given the complex nature of humanitarian situations and the challenges of integrating sustainable energy solutions into the humanitarian program cycle, there is a need for systemic actions to mobilise resources, build capacity, raise awareness, and use the opportunity for energy solutions to enhance positive impact in sectors such as health, protection, food security, education and WASH.

The Global Plan of Action for Sustainable Energy Solutions in Situations of Displacement

In January 2018, major humanitarian partners started a multistakeholder initiative to promote sustainable energy in situations of displacement. The Global Plan of Action for Sustainable Energy Solutions in Situations of Displacement (GPA) was created to address current challenges that impede energy access in humanitarian settings, and thus provides a framework that will provide concrete actions for a more systemic, collaborative approach towards the vision of "safe access to affordable, reliable, sustainable, and modern energy services for all displaced people by 2030." The GPA is the result of extensive consultation among humanitarian and development organisations, the private sector, governments, academia, and other stakeholders involved in the provision of fuel and energy to displaced people.

GPA Support Structure



Want to learn more about this topic?

The World Bank together with UNHCR, IOM, GIZ, and UNITAR invites you to attend a brown bag lunch about Sustainable Energy Solutions in Situations of Displacement.

Date & Time

January 16, 2019 | 12:30 - 2:00 pm

Location

World Bank, Room: MC 10-100

The GPA is steered by:

The GPA is supported by: